

Safe Drinking Water

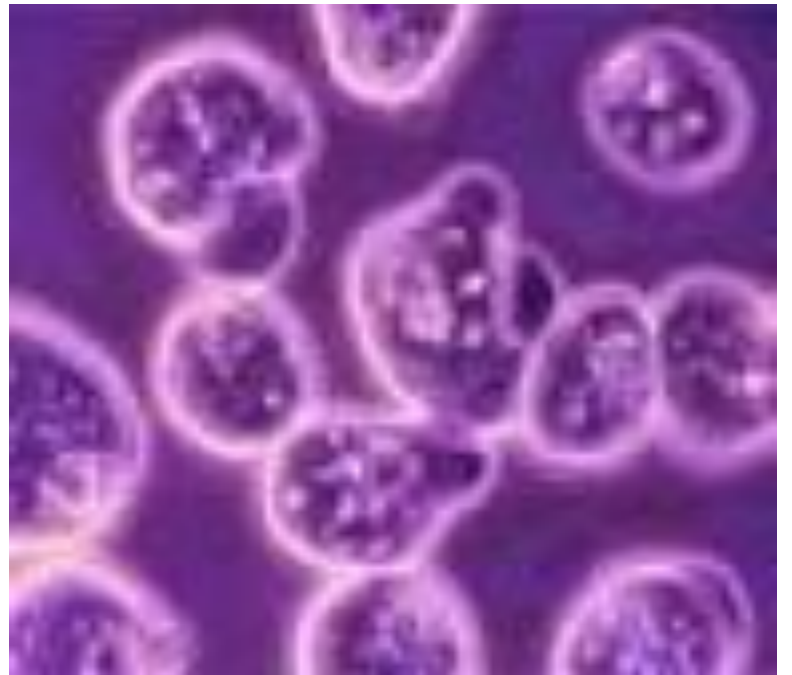


WHY ARE OUR CHILDREN GETTING SICK?

- Much of the water that our children drink is not considered safe. Have you ever seen a child drink water straight out of a spigot? Have you ever seen a child drink water straight out of a rain vat?

Although this water might seem clean – in many cases it is not. Just because water is clear does not make it safe to drink!





So what is the answer?



Sawyer Point One Filter



What makes the Sawyer Point One Filter work



- This filter uses the same medical technology that developed for kidney dialysis
- This filter removes 99.999 of all bacteria
- This filter removes 99.999 of all Protozoa
- This filter cleans 5 gallons of water in 20 minutes



How does it work ?

- Prepare a “clean” 5 gallon container to store purified water – this can be done by taking 1 tablespoon of bleach along with clean water and “swishing” around container
- Fill bucket with contaminated water
- Make sure clean container is lower then 5 gallon bucket and place filter tube into clean container
- In less then 20 minutes you will have purified water that is now safe to drink



When your water filter is working correctly the positioning should look something like this. We have found it easier to place purified water into a 5 gallon bottle which can then be **capped** and stored. It is important that purified water goes in to a stanitized container/bottle to insure that water remains safe to drink and that it is covered

IMPORTANT

Your students now will have safe purified water to drink. It is a a basic human right that all people should have safe water to drink – This filter system will last many years



BACK WASHING YOUR FILTER

- Each kit is comes complete with a syringe and a 2” piece of plastic tubing



- When you notice your filter is not flowing as quickly as it should. Simply fill the syringe with clean water. Remove filter at the quick disconnect

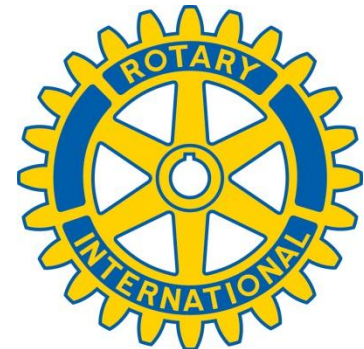
These filters were made possible by

- The Rotary Club of San Ignacio
- The Rotary Club of Carlsbad Hi-Noon
- MSNI Rotary District 6110



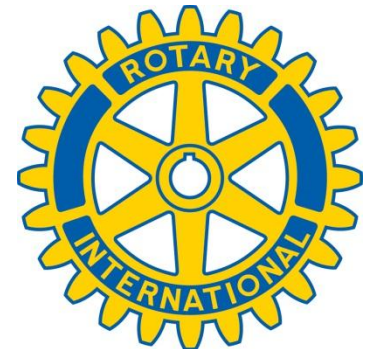
BACK WASHING YOUR FILTER

- With the filter disconnected from the bucket place the end of the syringe into the black opening and squeeze. You are forcing clean water back through the filter. Do this several until water comes out clean. **Make sure all discharged water is disposed of properly**





This is your
Hose, Your Quick
Disconnect and you Filter



Frequently Asked questions

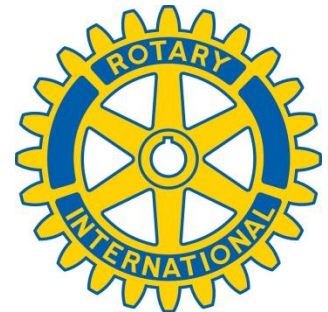
How long does the filter/purifier last?

Proper backwashing restores the filter to 99% of its original capacity. Since the filters and purifiers can continuously be backwashed and reused

they have an extremely long life. The filter/purifier membrane may never need to be replaced, however when the flow rate slows or the filter clogs, simply backwash the unit with the provided backwashing device to clear out the pores.

How often do you have to clean or backwash the filter?

The frequency of cleaning depends on how dirty the water is. With relatively clear water, backwashing may only be necessary every 1,000 gallons. With extremely turbid or muddy water, backwashing may be required every 10 gallons. Nevertheless, backwashing is an extremely simple process and only takes a minute



Frequently Asked questions

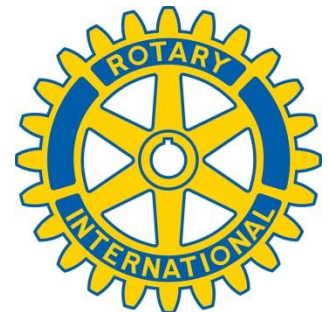
Can you put muddy water in the bucket?

Yes, though backwashing will be required more frequently. It will not alter the effectiveness of the filter to remove harmful pathogens.

How much water can be filtered/purified per day?

The flow rates of the filters and purifiers are determined by a combination of four variables:

- Head pressure (The distance from the top of the water to the filter)
- Altitude (The higher the altitude, the slower the flow rate)
- How clean the filter is
- The filter itself (there are slight variations between filters)







Mattson
LEASING COMPANY

BELIZE C.A.
CY T0331

ET
1275
1281
1282
1283
1284
1285
1286
1287
1288
1289
1290
1291
1292
1293
1294
1295
1296
1297
1298
1299
1300





FORNIA
SAND





ROTARY CLUB
OF
SANGRE

SAWYER



